



# RBH Technical Bulletin

2 Automatic Road, Suite 108  
Brampton, Ontario  
Canada L6S 6K8

## Axiom

**Number: 59**

**Factory Default LIF200**

**Set LIF-200 to factory default with push button**



1. Power off LIF-200.
2. Click & hold the Reset Button.
3. Power on LIF-200.
4. Release the Reset Button after about 3 seconds.
5. The LIF-200 is now reset to the factory default settings.

## Set LIF-200 to factory default using RS232 communications

- 1) Connect LIF-200 to computer via RS-232 cable and set RS232/485 switch to the RS232 position.

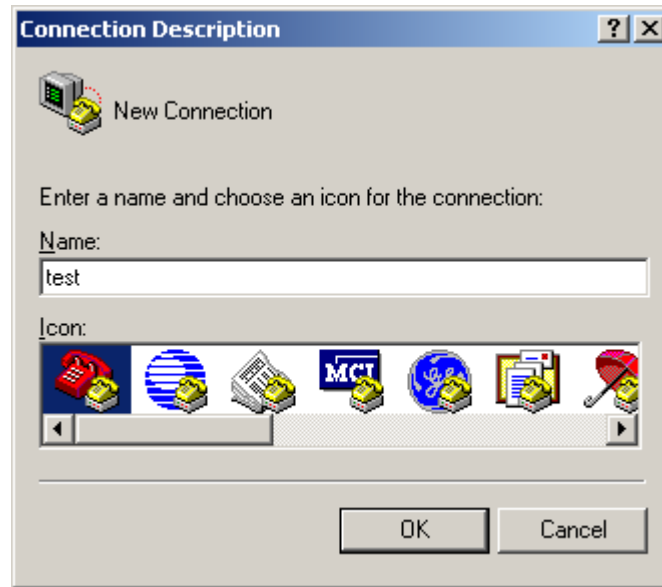


**You must use a crossover cable.** *The second pin of the LIF-200 connects to the third pin of the computer and the third pin of the LIF-200 connects to the second pin of the computer.*

- 2) Run HyperTerminal™



- a) Enter a name and select an icon for this communication, then click 'OK' to continue.

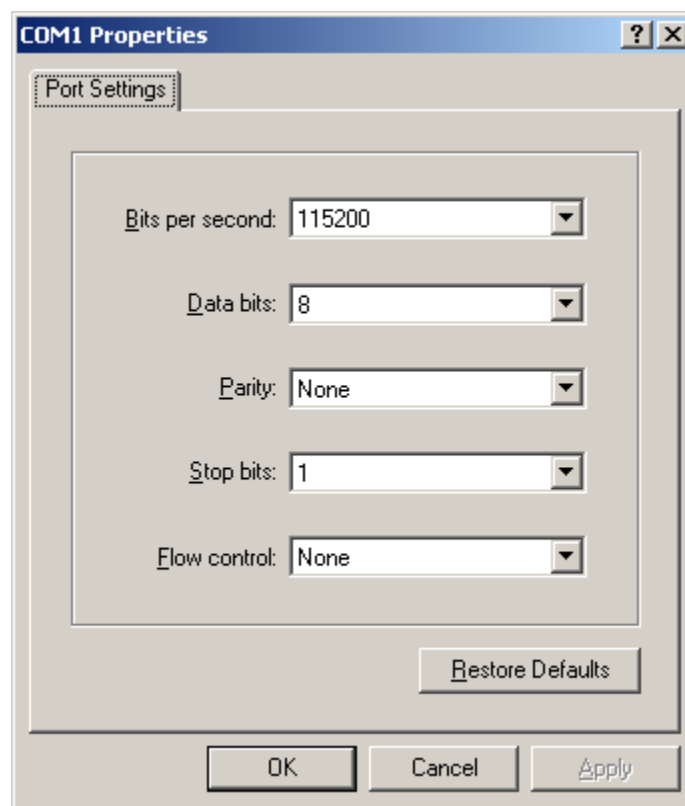


- b) Select the appropriate COM port for the LIF-200 connection to the computer then click 'OK' to continue.



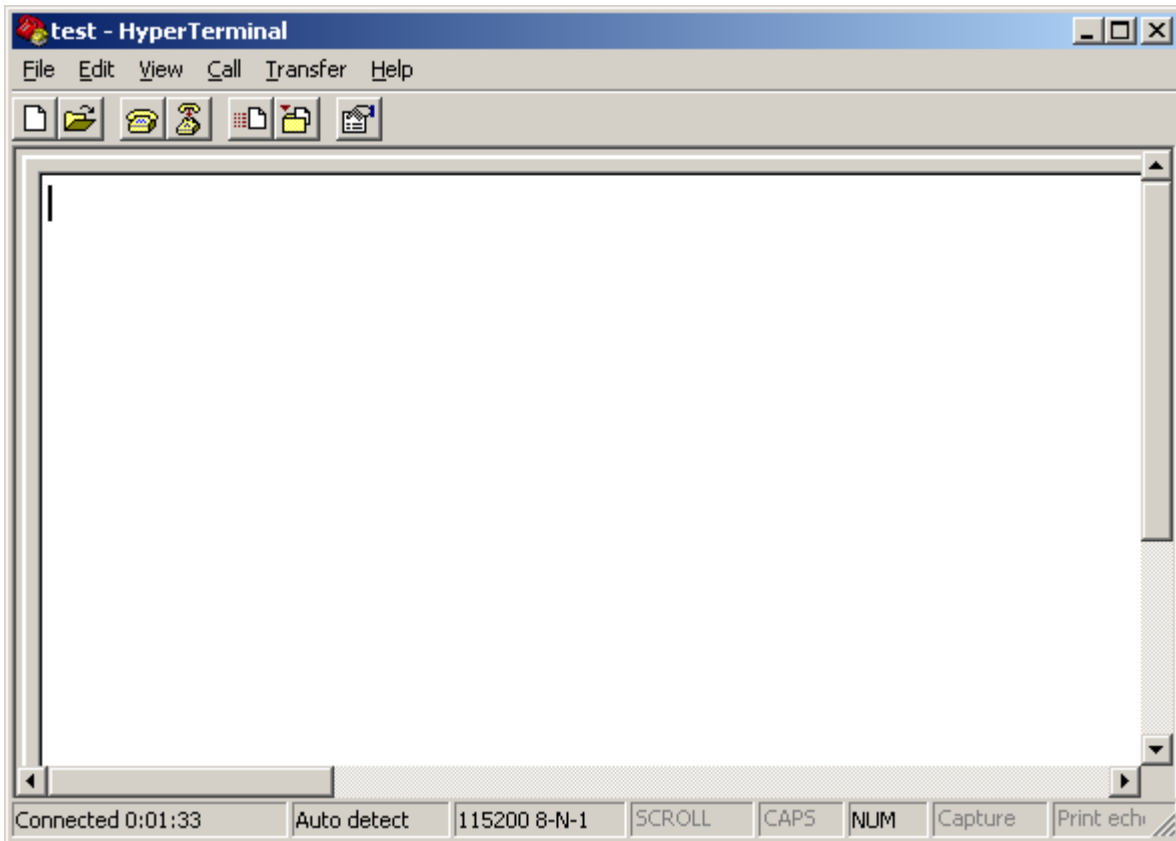
c) Configure your port settings as follows:

- i) Set: Bits per second = 115200
- ii) Set: Data bits = 8
- iii) Set: Parity = None
- iv) Set: Stop bits = 1
- v) Set: Flow control = None



vi) Click 'OK' to confirm port settings.

3) With HyperTerminal™ set as the working window repower the LIF-200 and click "**Ctrl+R**" within three seconds of the LIF-200 being powered on.



4) Use IP Locator to confirm that the factory default settings have been reset.

